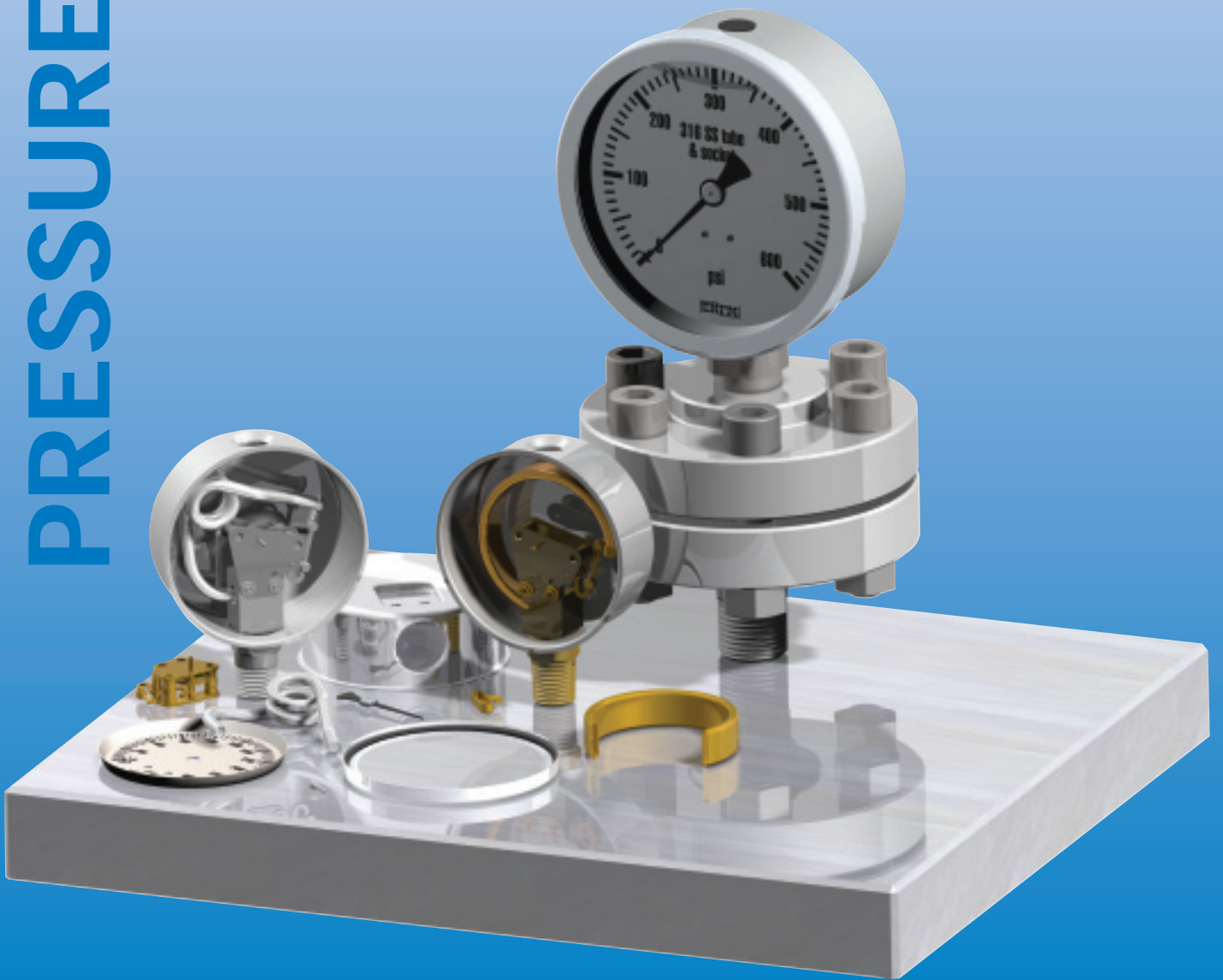


PRESSURE GAUGES



PRESSURE AND TEMPERATURE
INSTRUMENTATION



MANUFACTURING FOR WORLDWIDE DISTRIBUTION SINCE 1906

Total customer satisfaction is our number 1 goal

3000



Standard Pressure Gauges

Copper Alloy wetted parts
Black steel case
Case size 1 1/2", 2" & 2 1/2"
Accuracy: 3-2-3 % of span ASME B40.1 Grade B

7110



Field Fillable Pressure Gauges

Copper Alloy wetted parts
Stainless steel case
Case size: 1 1/2", 2", 2 1/2" & 4"
Accuracy:
1.6% of span for 1 1/2", 2" & 2 1/2"
1.0% of span for 4"
ASME B40.1 Grade 1A

6000



Standard Pressure Gauges

Copper Alloy wetted parts
Black steel case
Case size: 1 1/2", 2", 2 1/2" & 4"
Accuracy: 1.6% of span

7610



Field Fillable Industrial Pressure Gauges

Copper Alloy wetted parts
Stainless steel case & bayonet ring
Case size: 4" & 6"
Accuracy: 1% of span ASME B40.1 Grade 1A

7010



Standard Pressure Gauges

Copper Alloy wetted parts
Stainless steel case, dry design
Case size 1 1/2", 2" & 2 1/2"
Accuracy: 1.6% of span

7611



Field Fillable Industrial Pressure Gauges

Copper Alloy wetted parts
Stainless steel case & bayonet ring
Case size: 2 1/2" & 4"
Accuracy:
1.6 % of span for 2 1/2",
1.0 % of span for 4".
ASME B40.1 Grade 1A





7210

Liquid Filled Pressure Gauges

Copper Alloy wetted parts
 Stainless steel case
 Case size: 1 1/2", 2, 2 1/2" & 4"
 Accuracy:
 1.6 % of span for 1 1/2", 2, & 2 1/2"
 1.0 % of span for 4".
 ASME B40.1 Grade 1A



**Custom design and
 production printing
 of any scale or logo
 is available.**

7711

Liquid Filled Industrial Pressure Gauges

Copper Alloy wetted parts
 Stainless steel case & bayonet ring
 Case size: 2 1/2" & 4"
 Accuracy:
 1.6 % of span for 2 1/2",
 1.0 % of span for 4".
 ASME B40.1 Grade 1A



7210SAE

Liquid Filled Pressure Gauges

Copper Alloy wetted parts
 Stainless steel case
 Case size: 2 1/2"
 SAE 7/16" - 20 Threads
 Accuracy: 1.6% of span



6210

Liquid Filled Standard Pressure Gauges

Copper Alloy wetted parts
 Stainless steel case
 Case size: 4"
 Accuracy: 2-1-2 % of span ASME
 B40.1 Grade A



7710

Liquid Filled Industrial Pressure Gauges

Copper Alloy wetted parts
 Stainless steel case & bayonet ring
 Case size: 4" & 6"
 Accuracy: 1.0 % of span
 ASME B40.1 Grade 1A



**Performance
 under pressure
 since 1906**

*For product details see our site:
www.enfm.net*



We produce over
one million quality
instruments
annually

7020

Stainless Steel Pressure Gauges

Stainless steel wetted parts
Stainless steel case, dry design
Case size 2"
Accuracy: 2.5% of span

*Performance
under pressure
since 1906*

*For product details see our site:
www.enfm.net*

7620

Field Fillable Stainless Steel Pressure Gauges

Stainless steel wetted parts
Stainless steel case & bayonet ring
Case size 2¹/₂", 4" & 6"
Accuracy:
1.6% of span for 2¹/₂"
1.0% of span for 4" & 6"
ASME B40.1 Grade 1A

8620

Safety Pattern Stainless Steel Pressure Gauges

Solid front blow out back safety
pattern case
Stainless steel wetted parts
Case size 2¹/₂", 4" & 6"
Accuracy:
1.6% of span for 2¹/₂"
1.0% of span for 4" & 6"
ASME B40.1 Grade 1A

7120

Field Fillable Stainless Steel Pressure Gauges

Stainless steel wetted parts
Stainless steel case
Case size 2¹/₂"
Accuracy: 1.6% of span

8800

Process Gauges

Solid front blow out back
safety pattern case
Micrometer pointer
Liquid fillable
Case size 4¹/₂"
Accuracy: +/- 0.5% of span ASME
B40.1 Grade 2A





6220

Liquid Filled Standard Pressure Gauges

Stainless steel wetted parts
Stainless steel case
Case size 4"
Accuracy: 2-1-2% of span ASME B40.1 Grade A



8720

Liquid Filled Safety Pattern Pressure Gauges

Solid front blow out back safety pattern case
Stainless steel wetted parts
Case size 2 1/2", 4" & 6"
Accuracy:
1.6% of span for 2 1/2"
1.0% of span for 4" & 6"
ASME B40.1 Grade 1A



7220

Stainless Steel Liquid Filled Pressure Gauges

Stainless steel wetted parts
Stainless steel case
Case size 2 1/2"
Accuracy: 1.6% of span



8900

Liquid Filled Process Gauges

Solid front blow out back safety pattern case
Micrometer pointer
Case size 4 1/2"
Accuracy: +/- 0,5% of span
ASME B40.1 Grade 2A



7720

Stainless Steel Liquid Filled Pressure Gauges

Stainless steel wetted parts
Stainless steel case & bayonet ring
Case size 2 1/2", 4" & 6"
Accuracy:
1.6% of span for 2 1/2"
1.0% of span for 4" & 6"
ASME B40.1 Grade 1A



9510

Precision Test Gauges

Copper Alloy wetted parts
Stainless steel case
Mirror Scale
Case size: 6"
Accuracy: 0.25% of span ASME B40.1 Grade 3A. NIST Traceable



7770

Stainless Steel Liquid Filled Pressure Gauges

Stainless steel wetted parts
Stainless steel case welded to connection
Case size 2 1/2" & 4"
Accuracy:
1.6% of span for 2 1/2"
1.0% of span for 4"
ASME B40.1 Grade 1A





6000A/6210A

Altitude Gauges

Copper Alloy wetted parts
Black steel or Stainless steel
dry or liquid filled case
Case size 4"
Accuracy: 3-2-3% of span
ASME B40.1 Grade B



8800R

Receiver Gauges

Solid front blow out back safety
pattern case
Micrometer pointer
Case size 4 1/2"
Accuracy: +/- 0.5% of span
ASME B40.1 Grade 2A



600ISS

Internal Syphon Steam Gauges

Copper Alloy wetted parts
Black steel case
Internal Syphon
Case size 2 1/2" & 4"
Accuracy: 3-2-3% of span
ASME B40.1 Grade B



NH₃ Gauges

NH₃ Ammonia Gauges

Stainless steel wetted parts
Stainless steel case
Case size 2 1/2" & 4"
Accuracy: 2-1-2% of span
ASME B40.1 Grade A



7510R/7520R

Receiver Gauges

Copper Alloy or Stainless Steel
wetted parts
Stainless steel case
Case size 2 1/2", 4" & 6"
Accuracy:
1.6% of span for 2 1/2"
1.0% of span for 4" & 6"
ASME B40.1 Grade 1A



5210

Liquid Filled Mining Gauges

Copper Alloy wetted parts
Cast Brass case
Case size 2"
Accuracy: 1.6% of span



3A7620/3A7720

3A Sanitary Gauges

Stainless steel wetted parts
Stainless steel polished case &
bayonet ring
Case size 2 1/2" & 4"
1 1/2" & 2" Tri-clamp process conn.
Accuracy:
1.6% of span 60-600 psi
2.0% of span <60 psi.





2000

Economy Capsule Gauges

Brass wetted parts
Black steel case
ANSI 2 1/2" case
Accuracy: 3-2-3% of span
ASME B40.1 Grade B



1520

Mechanical Diaphragm Pressure Gauges

Connection and Diaphragm 316
Stainless steel case & bayonet ring
Case size 4" & 6"
Accuracy: 1.6% of span



2510

Low Pressure Capsule Gauges

Brass wetted parts
Stainless steel case & bayonet ring
Re-calibration screw on dial
Case size 2 1/2" & 4"
Accuracy: 1.6% of span



5500

Differential Pressure Gauges

Copper Alloy or stainless Steel
wetted parts
Stainless steel case
Case size: 6"
1.0% of span ASME B40.1 Grade A



2520

Low Pressure Capsule Gauges

Stainless Steel wetted parts
Stainless steel case & ring
Re-calibration screw on dial
Case size 2 1/2" & 4"
Accuracy: 1.6% of span



**Performance
under pressure
since 1906**

For product details see our site:
www.enfm.net

State of the art "Solid Edge®"
Cad technology allows us
the opportunity for rapid
response to customer market
requirement changes.



*Performance
under pressure
since 1906*

*For product details see our site:
www.enfm.net*

05-100

Mini diaphragm seals



Threaded off line connection
compound thru 500 psi
Connection: Stainless steel 316,
1/4" or 1/2" NPT
Diaphragm: Stainless steel 316,
welded between upper and
lower housing

05-200/05-500

Diaphragm seals

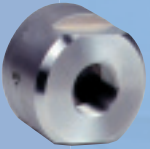


Series 05-200 Threaded Process
Connection
Series 05-500 Flanged Process
Connection

Connection: 1/2" NPT
Diaphragm: Welded to top
housing AISI 316

05-150

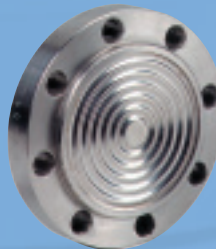
Mini diaphragm seals



Threaded off line connection
200-2500 psi
Connection: Stainless steel 316,
1/4" or 1/2" NPT
Diaphragm: Stainless steel 316,
welded between upper and
lower housing

05-400

Diaphragm seals



Series 05-400 Flange Connection

Connection: Stainless steel
AISI 316, 1/2" NPT
Diaphragm: Stainless steel
AISI 316, welded to flange

05-170

Mini diaphragm seals



Threaded off line connection
1000-6000 psi
Connection: Stainless steel 316,
1/4" or 1/2" NPT
Diaphragm: Stainless steel 316,
welded between upper and
lower housing

05-750

Diaphragm seals



Series 05-750 Tri-Clamp®

Connection: Stainless steel
AISI 316
Diaphragm: Stainless steel
AISI 316, welded



Tridicators / Thermometers



4201

Tridicator

Connection and stem
copper alloy
Black steel case
Diameter 3 1/4"
Accuracy: 2.5%



We are the world's
leader in high quality
hydronic tridicator
manufacturing



4104

Tridicator

Connection and stem
copper alloy
Black steel case
Diameter 2 1/2"
Accuracy: 2.5%



16200

Nitrogen Filled Thermometers

Stainless steel case & bayonet ring
Stainless steel stem & connection
Diameter 4" & 6"



4004

Bimetal Thermometers

Thermowell and stem brass
Black steel case
Case size 2 1/2", 3 1/4" & 4"



26200

Remote Nitrogen Filled Thermometers

Stainless steel case & bayonet ring
with capillary system
Stainless steel stem & connection
Diameter 4" & 6"



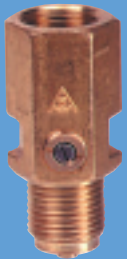
4120

ANSI Industrial Bimetal Thermometers

Case Stainless steel
Hermetically sealed
Connection and stem Stainless steel
Diameter 3" & 5"



ENFM manufactures and markets all products globally. Both service representatives and stocking distribution are available around the world.



Adjustable Snubbers

06-300



Cintered element Snubbers

06-310



Overpressure protector

05-800



Rubber covers

06-800



Siphons

06-400

***Performance
under pressure
since 1906***

For product details see our site:
www.enfm.net





Maximum slip pointer

ENFM offers for all sizes a maximum slip pointer in a dry or liquid filled version.



E.N.F.M. - U.S.A. INC.

475 West 38th Street
Houston, Texas 77018
U.S.A.

Tel. ++1 - 832 - 242 9184
Fax. ++1 - 832 - 242 9189
Homepage : www.enfm.net
E-Mail : info@enfmusa.com



ANSI Frontflange

ANSI Frontflange for 2 1/2" gauges



Panel Ring

Panel ring for 2" and 2 1/2" gauges



E.N.F.M. Instruments B.V.

Nieuwpoortweg 10
3125 AP Schiedam
P.O. Box 148
3100 AC Schiedam
The Netherlands
Tel. ++31 (0)10 - 43 73 799
Fax. ++31 (0)10 - 41 52 631
Homepage : www.enfm.nl
E-Mail : info@enfm.nl



Electrical contacts



E.N.F.M. MEß- UND INDUSTRIE-TECHNIK GMBH & CO. KG

Dahlener Strasse 131
D-41239 Monchengladbach, Germany
Tel. ++49 - 2166 14463 0
Fax. ++49 - 2166 14463 16
Homepage : www.enfm.de
E-Mail : info@enfm.de
verkauf@enfm.de



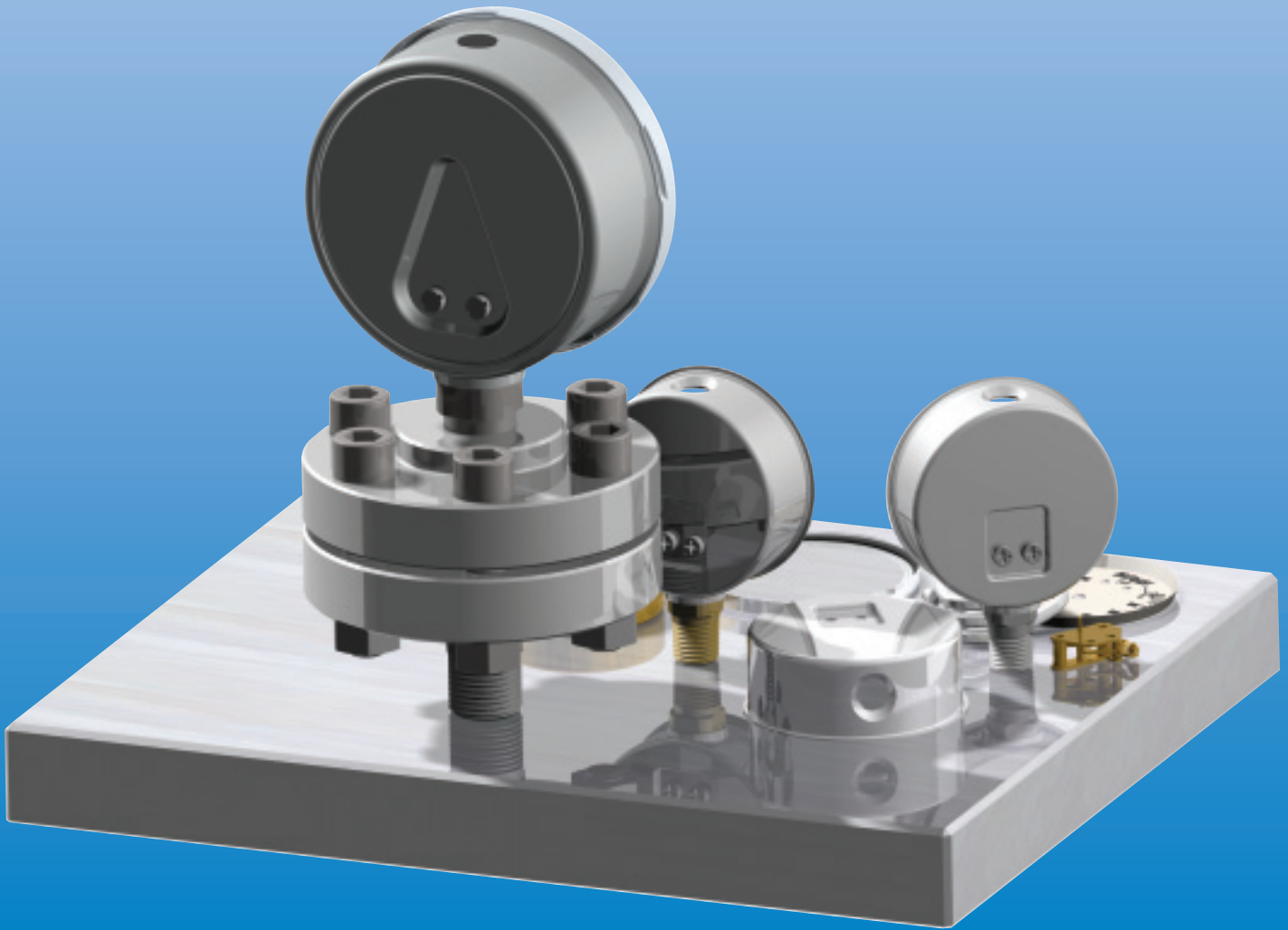
Thermowells



Machined from solid bar stock
Various configurations
fit standard thermometer stem length



WWW.ENFM.NET



ENFM-USA, INC. - 475 West 38th Street - Houston, TX 77018
tel: 832-242-9184 - fax: 832-242-9189 - E-mail: info@enfmosa.com